



M721 Phantom Series

1.4" Regressed Square Gimbal Downlight
Field Selectable 5 CCT | 1500 Lm | 15 W

Product Description

The advanced driver and COB system enables M721 to generate 1500 lumens of light with only 15 watts. This high luminous efficacy not only reduces the fixture size, but also extends the lifespan. The optics consist of a 1-3/8 inch aperture lens deeply regressed in a baffle to minimize glare and enhance visual comfort.

Order Information

Example: M721-NS-B

Model M721	Light Source	Beam Angle	Finish
1.4" Regressed Square Gimbal Downlight	5CT - 5CCT Selectable, CRI>90 25K - 2500K, CRI>95 27K - 2700K, CRI>95 30K - 3000K, CRI>95 35K - 3500K, CRI>95 40K - 4000K, CRI>95	NS - Narrow Spot (18°) SP - Spot (24°) FD - Flood (36°) Default WF - Wide Flood (60°)	W - White B - Black

Driver

T - ELV/TRIAC diming
V*- 0-10V diming

*Minimum Order Quantities Apply

Features

- Field selectable 5 CCT: 2700K, 3000K, 3500K, 4000K, 5000K
- TRIAC/ELV or 0-10V flicker free dimmable driver
- High Efficacy: 100 lumens/watt
- Cold forged engine grade aluminum pin fin heat sink for optimal thermal management
- Powder coated die cast aluminum flange
- Total internal reflect (TIR) lenses provides highly precise beam shapes with minimal glare and light spill.
- Four beam angles available
- Silicon rubber sealing gasket above the flange to prevent air and water leakage

Specifications

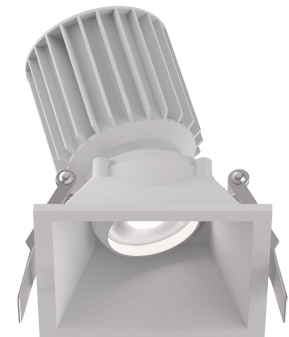
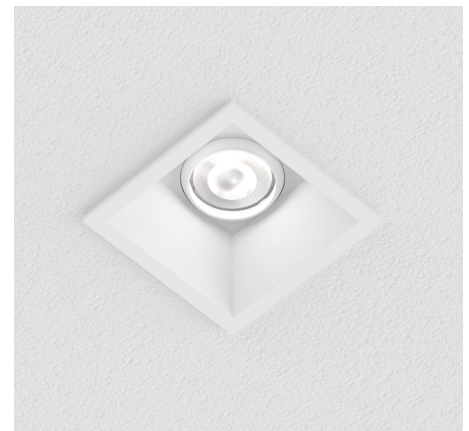
Light Output: 1500 lumens
Power: 15W
Efficacy: 100 lumens/watt
Input Voltage: 120V
CCT Selectable: 2700K/3000K/3500K/4000K/5000K
CRI: >90 or >95
Aiming: Tilt ±17°, Rotate 360°
Lumen Maintenance: 70% @ 60,000 hrs
Dimming: ELV/TRIAC/0-10V diming
Rating: IC rated, IP20
Certification: cETLus
Warranty: Five years limited warranty

Dimensions

Aperture: 1.4 inch
Inner Diameter: 3 inch
Outer Diameter: 3.3 inch
Ceiling Clearance Required: 3.9 inch

Specification Sheet

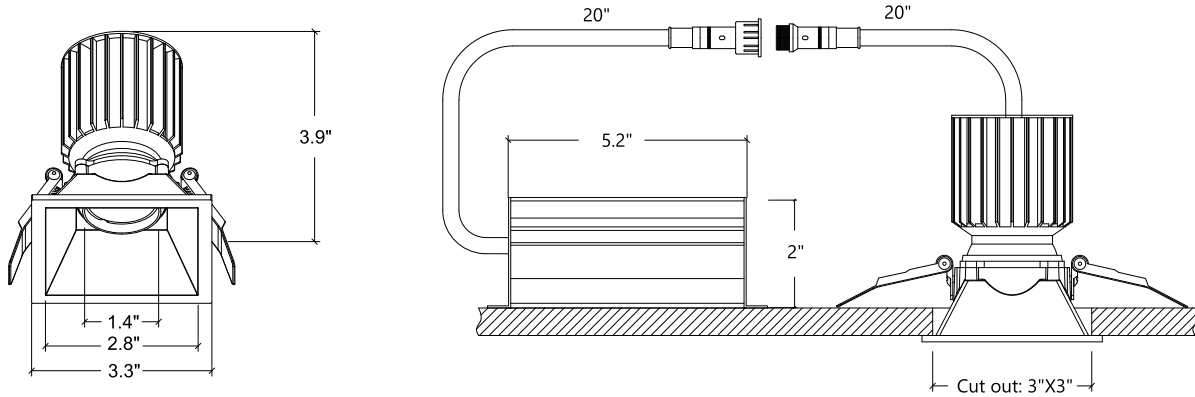
Project Name :
Location :
Quantity :
Date :
Notes:



Consult website for detail:
www.vvydlighting.ca/warranty

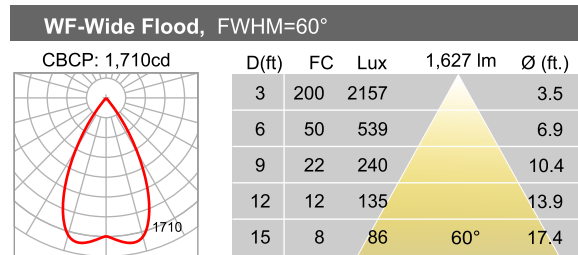
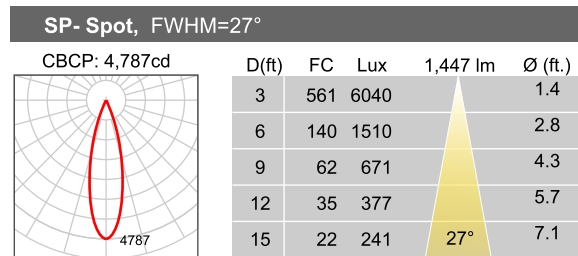
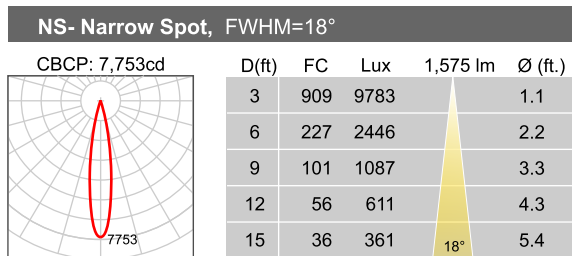
M721 Phantom Series

Dimensions



Photometric Data

* Tested in accordance with IES LM63. Field results may vary



Data shown is measured for 3000K light source. Multiply CBCP, FC and Lux by the following adjustment factors for other light sources

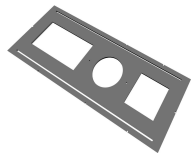
Light Source	27K	30K	35K	40K	50K
Adjustment Factors	0.94	1.00	1.08	1.13	1.22

Accessories

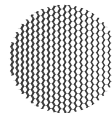
BLD-HM20D-480800
90 minute emergency backup driver



RP-M7
Rough-in plate



HC-35
Honeycomb Louver



Vyvyd Lighting Inc.
www.vyvydlighting.ca
info@vyvydlighting.ca
(905)669-3888

220 Viceroy Rd, Unit 14
Concord, Ontario,
Canada, L4K 3C2

©2023 Vyvyd Lighting Inc. All rights reserved. This document may be subject to change. No representation or warranty as to the accuracy or completeness of the information included herein is given any liability for any action in reliance thereon is disclaimed. All trademarks are owned by Vyvyd Lighting Inc. and their respective owners.